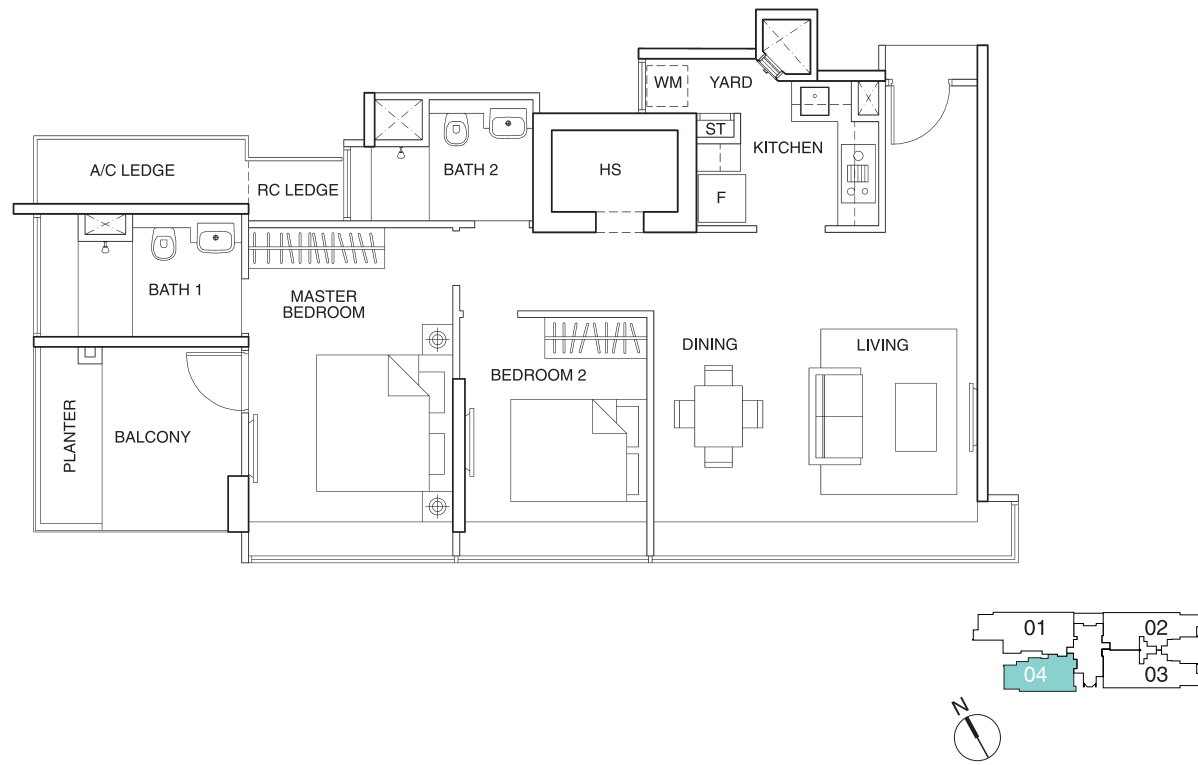
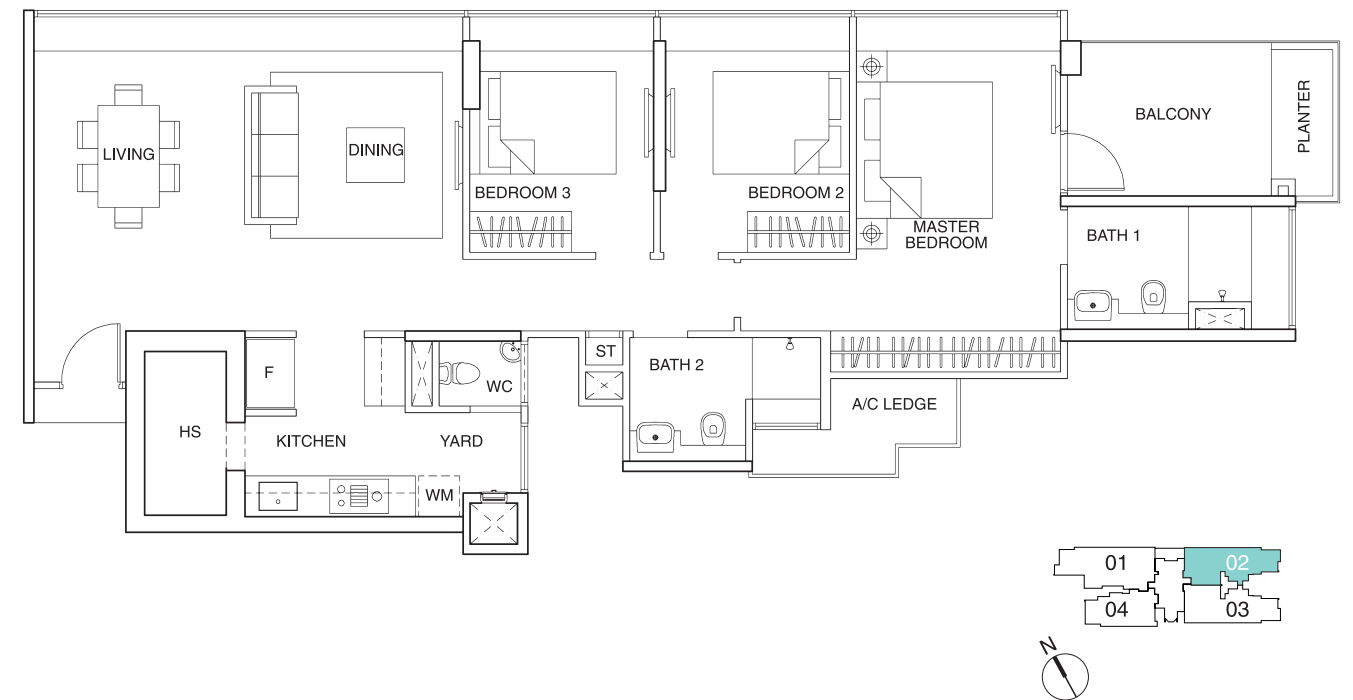


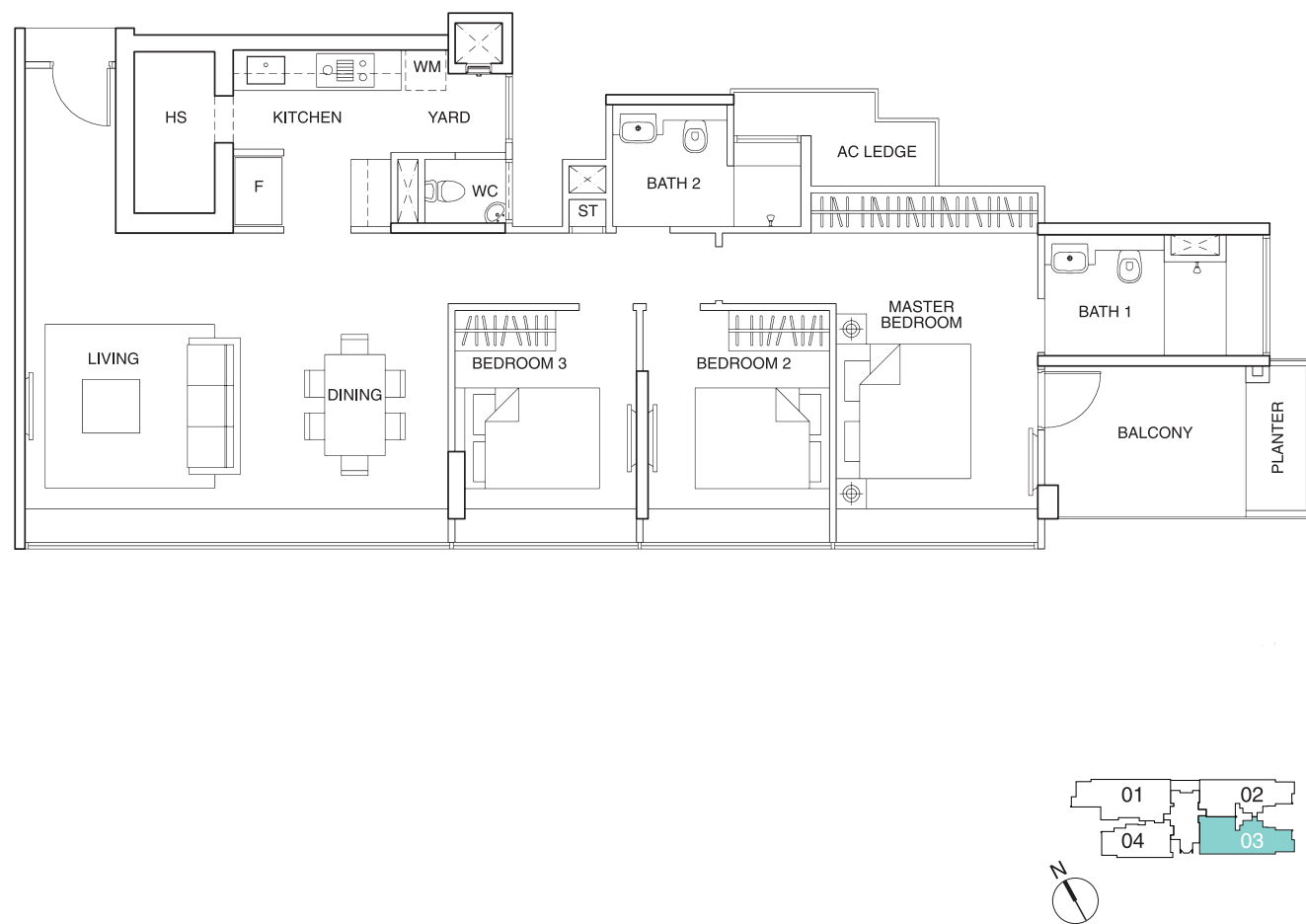
Type A (2-Bedroom) | Area 90 sq m / 969 sq ft
 Unit #02-04 to #16-04,
 #17-04 (with open balcony)



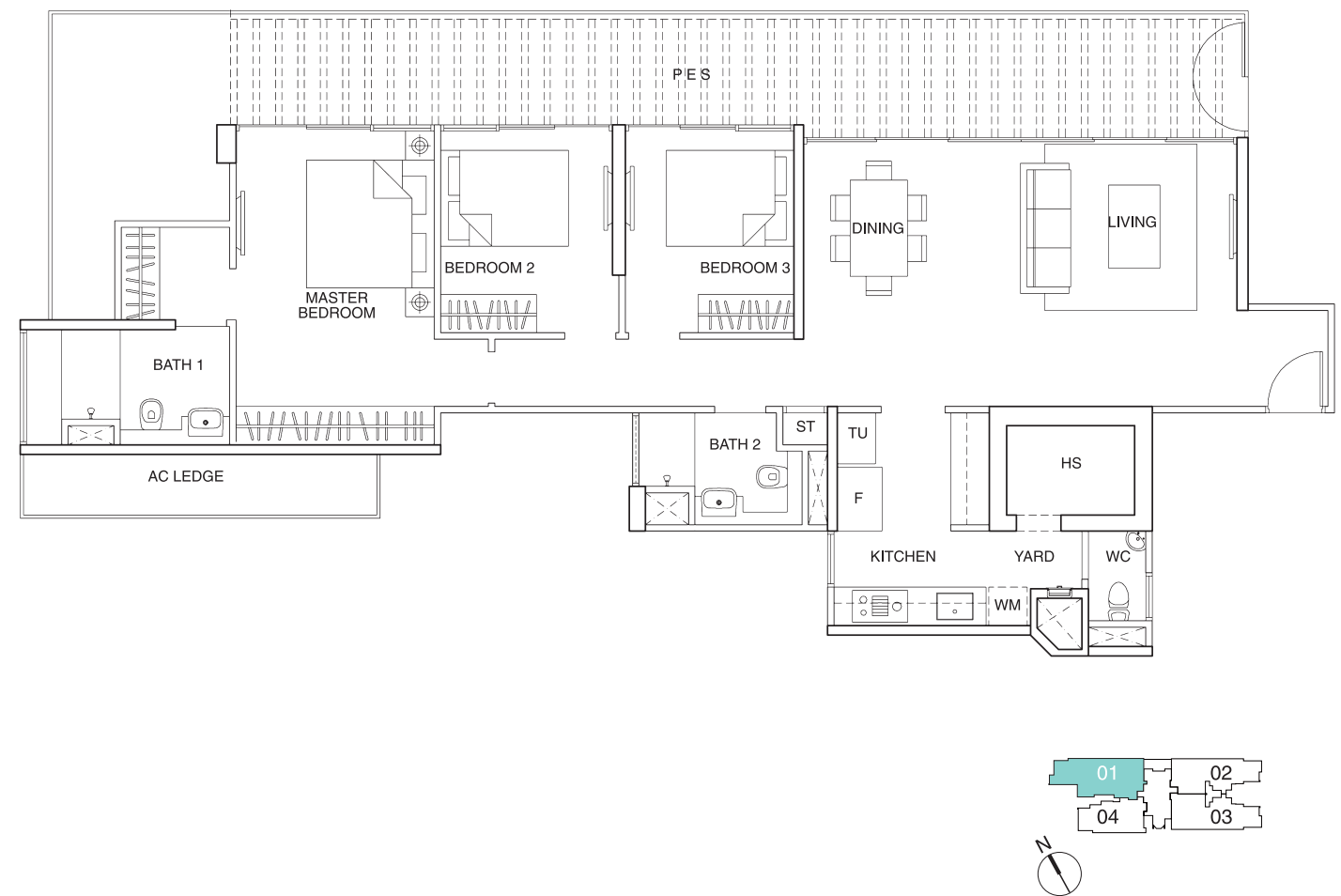
Type B1 (3-Bedroom) | Area 115 sq m / 1238 sq ft
 Unit #02-02 to #16-02,
 #17-02 (with open balcony)



Type B (3-Bedroom) | Area 117 sq m / 1259 sq ft
 Unit #02-03 to #16-03,
 #17-03 (with open balcony)

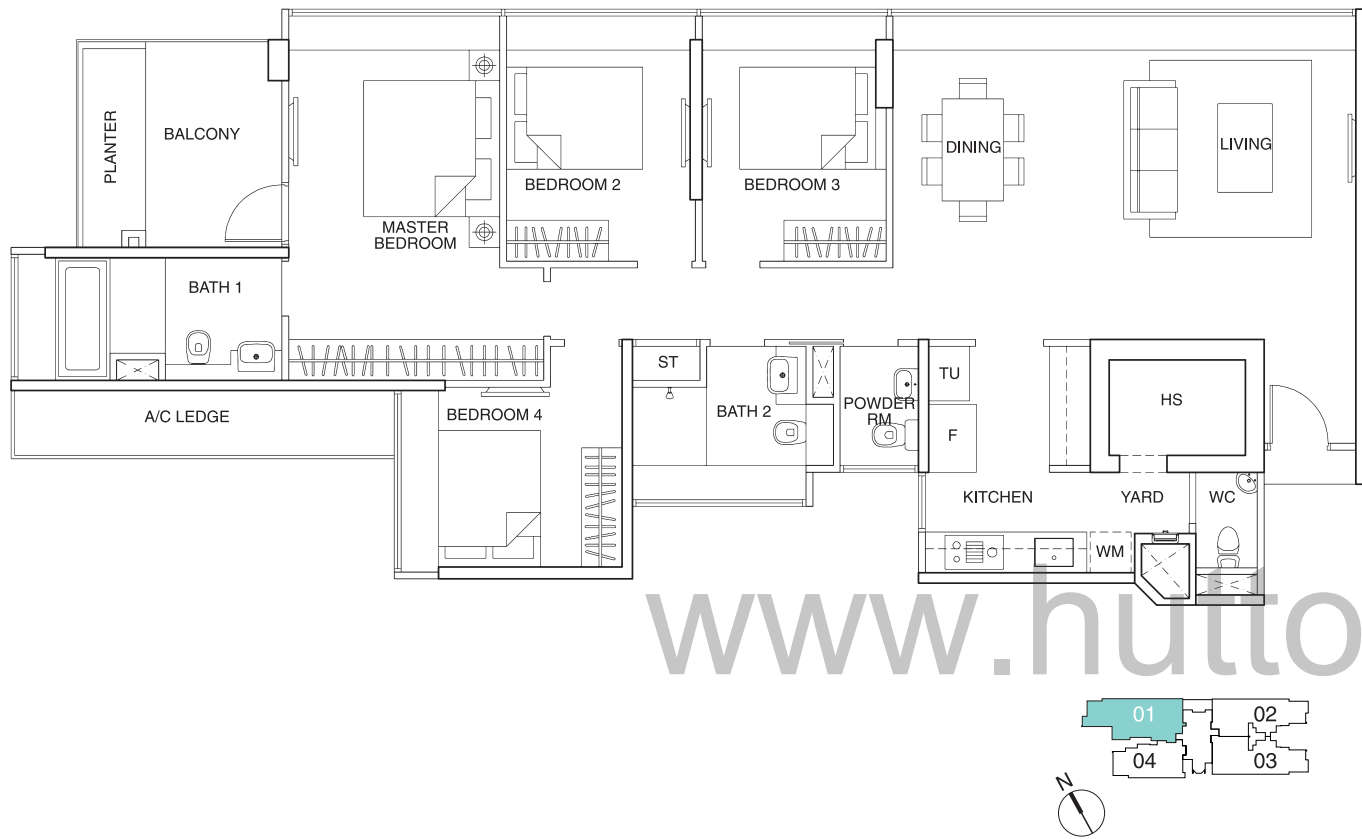


Type BP (3-Bedroom) | Area 149 sq m / 1604 sq ft
 Unit #01-01



www.huttonsgroup.com

Type C (4-Bedroom) | Area 140 sq m / 1507 sq ft
 Unit #02-01 to #16-01,
 #17-01 (with open balcony)



Specifications

- 1) **FOUNDATION**
Cast in-situ bored piles and / or other approved foundation
- 2) **SUPERSTRUCTURE**
Reinforced concrete structure
- 3) **WALLS**
 - (a) External - Reinforced concrete and / or common clay bricks
 - (b) Internal - Reinforced concrete and / or common clay bricks and / or pre-cast wall panels / lightweight concrete blocks / dry wall partitions
- 4) **ROOF**
Reinforced concrete roof with appropriate insulation and waterproofing systems
- 5) **CEILING**
 - (A) Unit

Living, Dining, Bedrooms, Household Shelter, Store, Balcony and planter	:	Skim coat with emulsion paint with bulkhead where applicable
Open Balcony / PES	:	RC and / or metal trellis
Hallway to Bedrooms, Kitchen, Yard, Bathrooms, Powder Room (Type C only) and WC	:	Ceiling board with emulsion paint
 - (B) Common Areas

Lift Lobbies	:	Ceiling board with emulsion paint
Basement Carpark and Staircases	:	Skim coat with emulsion paint finish
Open Carpark	:	RC and / or metal trellis
- 6) **FINISHES**
 - (A) Unit

Living, Dining, Bedrooms, Household Shelter and Store	:	Cement & sand plaster and / or skim coat with emulsion paint
Balcony, Open Balcony, PES and Planter	:	Stainless steel glass railing and / or cement & sand plaster and / or skim coat with emulsion paint and / or spray texture coating
Bath 1, Bath 2 and Powder Room	:	Homogenous and / or marble and / or ceramic tiles with marble and / or granite feature wall (for Bath 1 only)
Kitchen, Yard and WC	:	Homogenous tiles and / or ceramic tiles
 - (B) Common Areas

Basement and 1st Storey Lift lobbies	:	Granite / marble and / or homogenous / ceramic tiles and / or cement & sand plaster with emulsion paint
Typical Floor Apartment Lift Lobbies and Common Corridors	:	Cement & sand plaster and / or skim coat with emulsion paint
- FINISHES FLOOR**
 - (A) Unit

Living, Dining and Hallway	:	Compressed marble tiles
Bedrooms	:	Timber flooring with timber skirting
Bath 1, Bath 2 and Powder Room	:	Homogenous and / or ceramic tiles
Household Shelter, Store, WC, Kitchen, Yard, PES, Balcony and Open Balcony (17th storey only)	:	Homogenous and / or ceramic tiles
 - (B) Common Areas

Basement, 1st Storey Lift Lobbies & Rooftop lift lobbies	:	Natural stone and / or compressed marble
All Common Corridors, typical Lift Lobbies (2nd to 17th storey) and Staircases (Basement to 2nd storey)	:	Homogenous tiles and / or ceramic tiles
Pool Deck and Roof Top Garden	:	Composite timber deck and / or natural stone and / or EPDM mat and / or pebble wash
- 7) **WINDOWS**
Powder-coated aluminium framed windows with clear and / or tinted and / or obscured glass where appropriate
- 8) **DOORS**
 - (a) Main Entrance
Approved fire-rated timber door
 - (b) Bedrooms, Bathrooms, Store
Hollow core timber swing door
 - (c) Powder Room (Type C)
Hollow core timber sliding door
 - (d) Dining to Kitchen
Sliding glass door
 - (e) Balcony, Open Balcony, PES
Powder-coated aluminium framed glass sliding and / or swing glass door
 - (f) WC
Slide & fold louvered door
 - (g) Household Shelter
Approved steel door and slide and fold louvered door.
 - (h) Quality lockset and ironmongery to all doors.
- 9) **SANITARY FITTINGS**
 - (a) Bath 1 (Type A, BP, B, B1)

:	1 shower compartment with mixer and shower head
:	1 wall hung water closet
:	1 marble vanity top with 1 semi-recessed basin and mixer
:	1 mirror
:	1 paper holder
:	1 towel rail
 - (b) Bath 1 (Type C)

:	1 long bath complete with mixer, hand shower and bath filler
:	1 shower compartment with mixer and shower head
:	1 wall hung water closet
:	1 marble vanity top with 1 semi-recessed basin and mixer
:	1 mirror
:	1 paper holder
:	1 towel rail
 - (c) Bath 2

:	1 shower compartment with mixer and shower head
:	1 wall hung water closet
:	1 marble vanity top with 1 semi-recessed basin and mixer
:	1 mirror
:	1 paper holder
:	1 towel rail