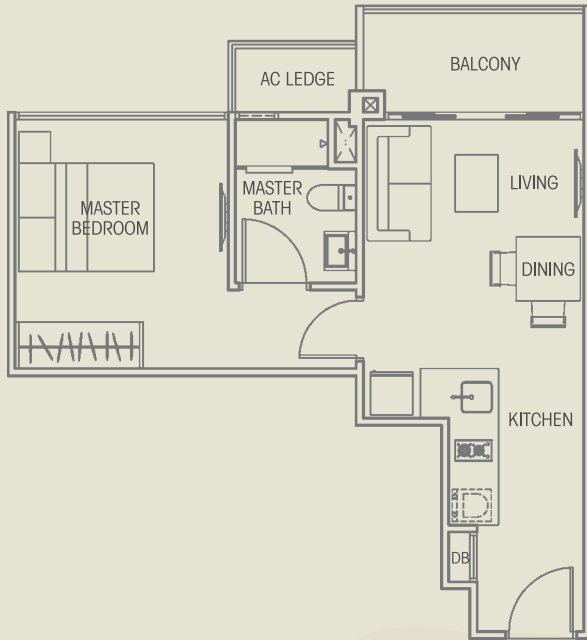


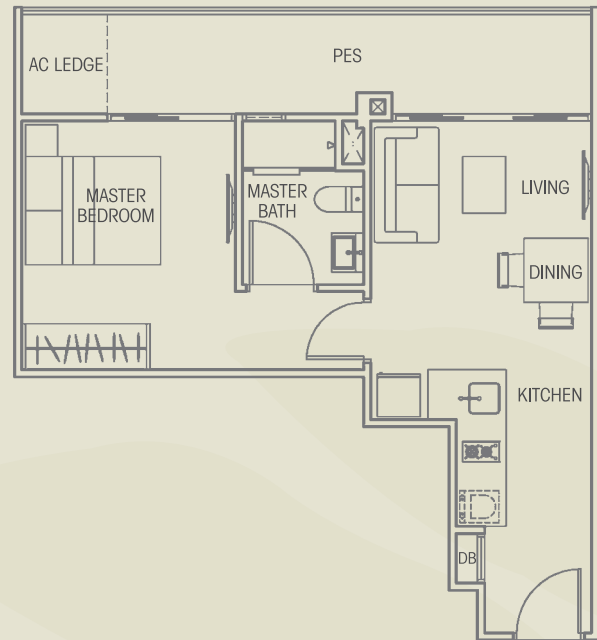
TYPE A1 (1 Bedroom)

Block 40 #02-15 to #12-15
 Block 46 #02-26 to #12-26
 Block 48 #03-32 to #12-32
 Block 50 #03-37 to #12-37
 Area 484 sqft



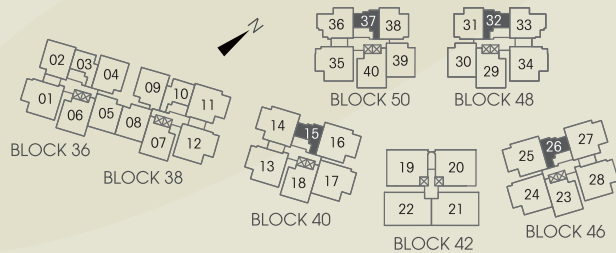
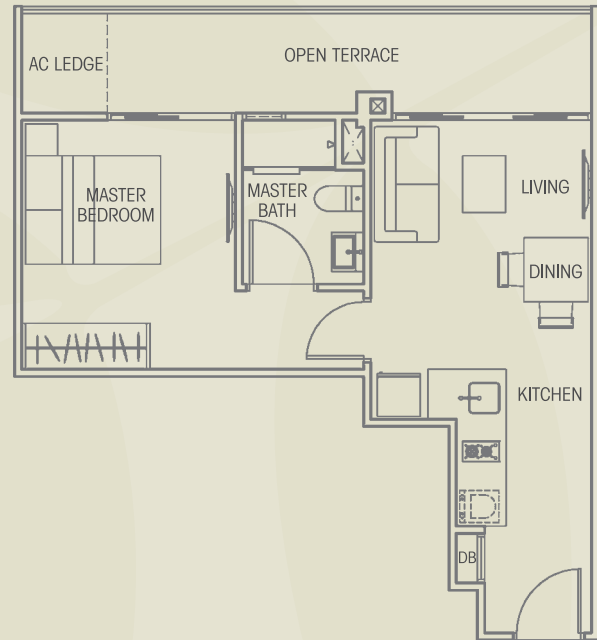
TYPE A1-G (1 Bedroom)

Block 40 #01-15
 Block 46 #01-26
 Area 538 sqft



www.huttonsgroup.com

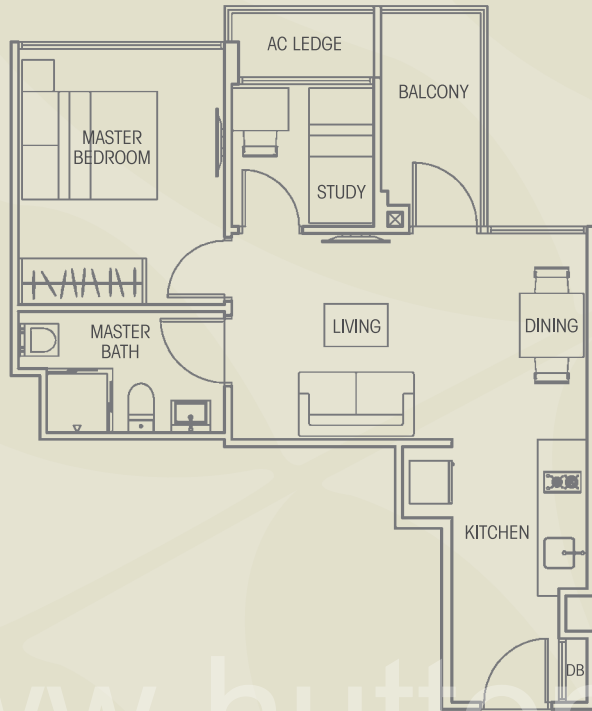
Block 48 #02-32
 Block 50 #02-37
 Area 538 sqft



All plans are not to scale and subject to amendments as approved by the relevant authorities. Floor areas are approximate measurements and subject to final survey.

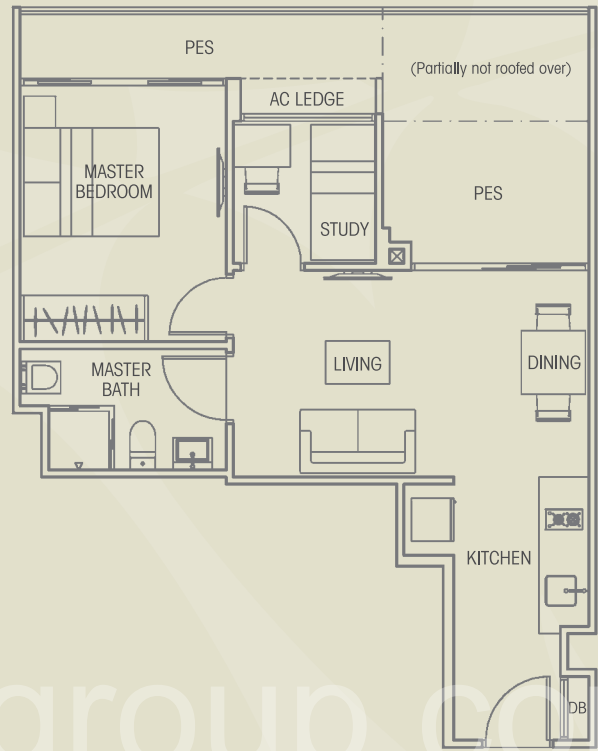
TYPE A2 (1 Bedroom + Study)

Block 36 #02-03 to #12-03
 Block 38 #02-10 to #12-10
 Area 560 sqft

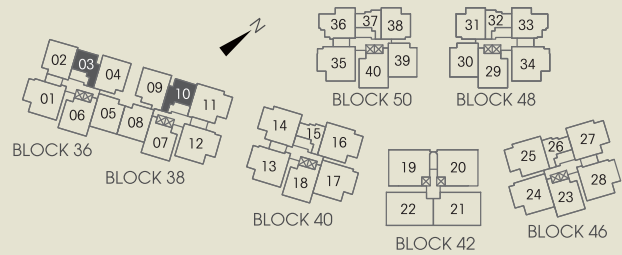


TYPE A2-G (1 Bedroom + Study)

Block 36 #01-03
 Block 38 #01-10
 Area 667 sqft

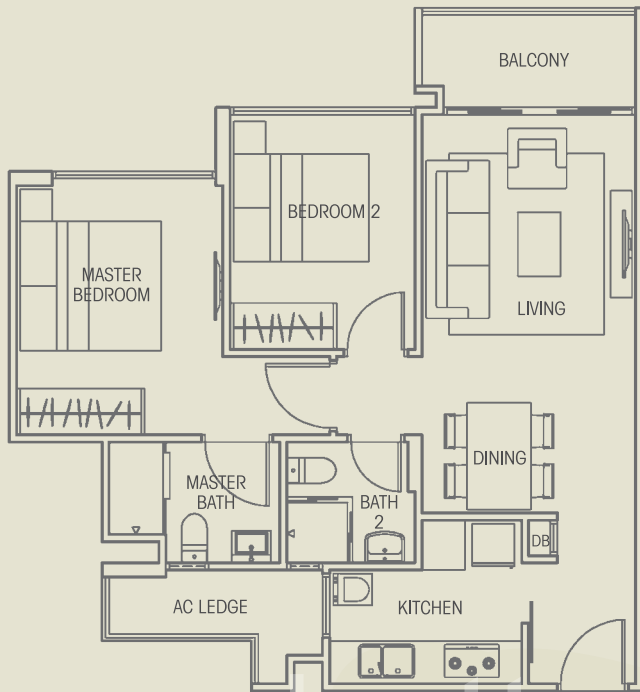


www.huttonsgroup.com



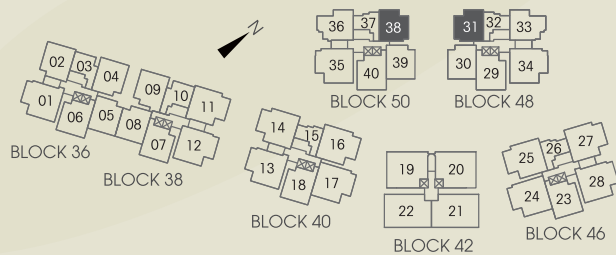
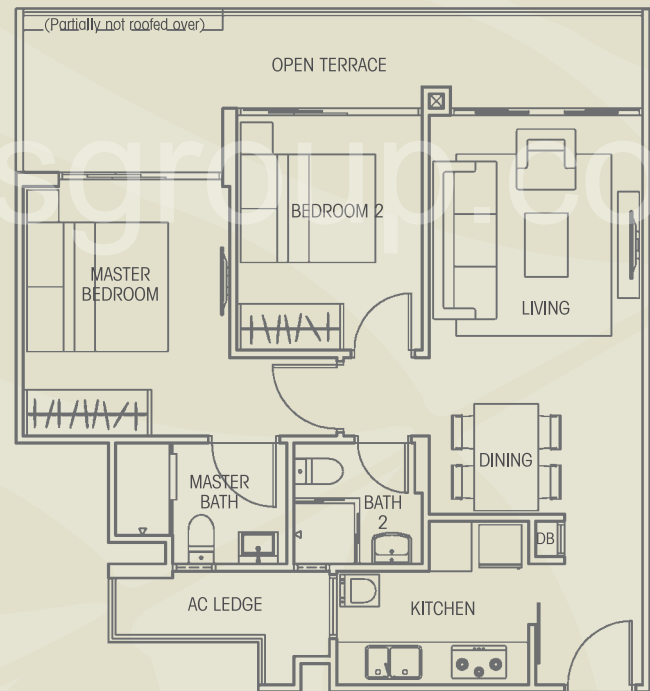
TYPE B1 (2-Bedroom)

Block 48 #03-31 to #11-31
 Block 50 #03-38 to #11-38
 Area 732 sqft



TYPE B1-G (2-Bedroom)

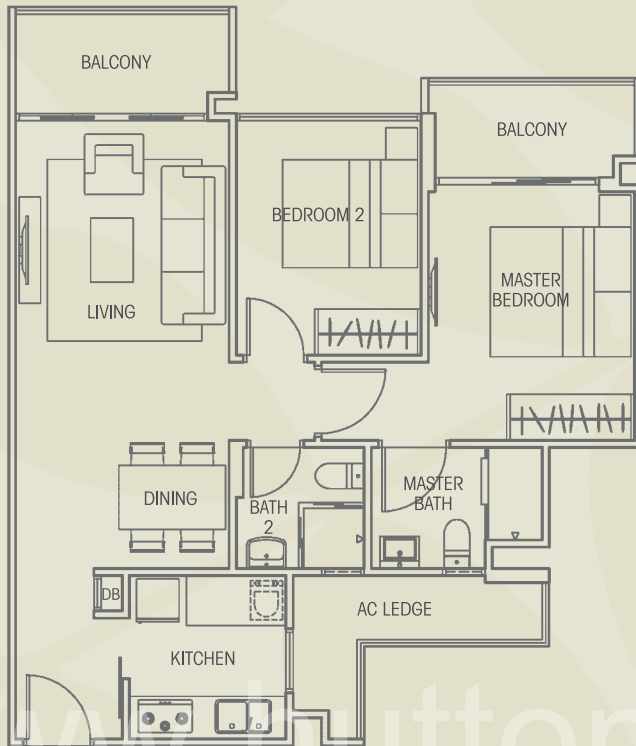
Block 48 #02-31
 Block 50 #02-38
 Area 850 sqft



All plans are not to scale and subject to amendments as approved by the relevant authorities. Floor areas are approximate measurements and subject to final survey.

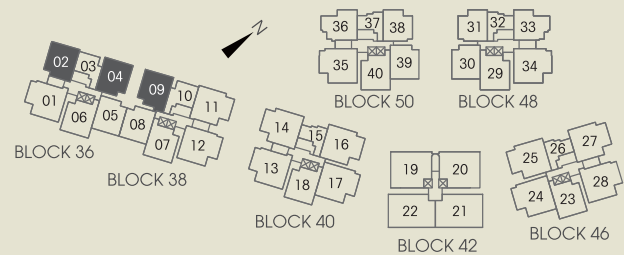
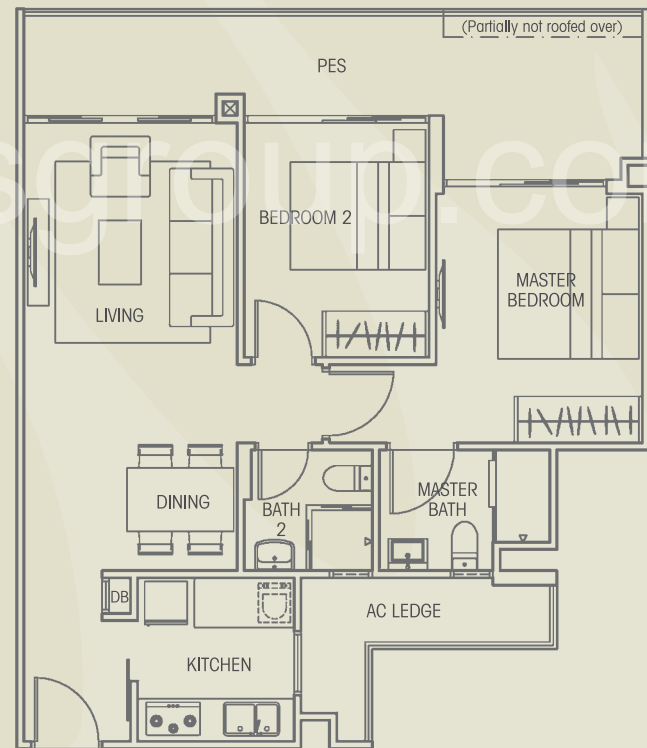
TYPE B2 (2-Bedroom)

Block 36 #02-02 to #11-02 & #02-04 to #11-04
 Block 38 #02-09 to #11-09
 Area 807 sqft



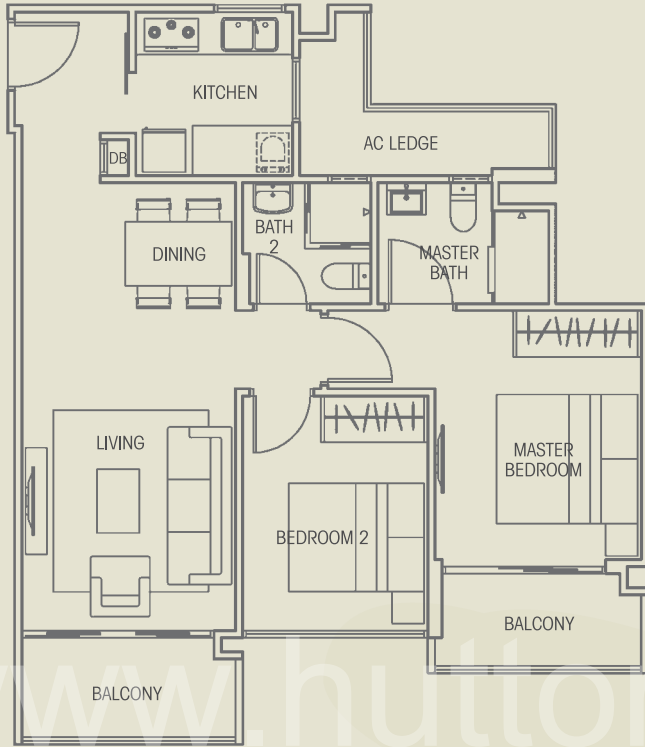
TYPE B2-G (2-Bedroom)

Block 36 #01-02 & #01-04
 Block 38 #01-09
 Area 883 sqft



TYPE B3 (2-Bedroom)

Block 36 #02-05 to #11-05
 Block 38 #02-08 to #11-08
 Block 48 #01-30 to #10-30
 Block 50 #01-39 to #10-39
 Area 807 sqft



TYPE B3-G (2-Bedroom)

Block 36 #01-05
 Block 38 #01-08
 Block 48 #B1-30
 Block 50 #B1-39
 Area 840 sqft

